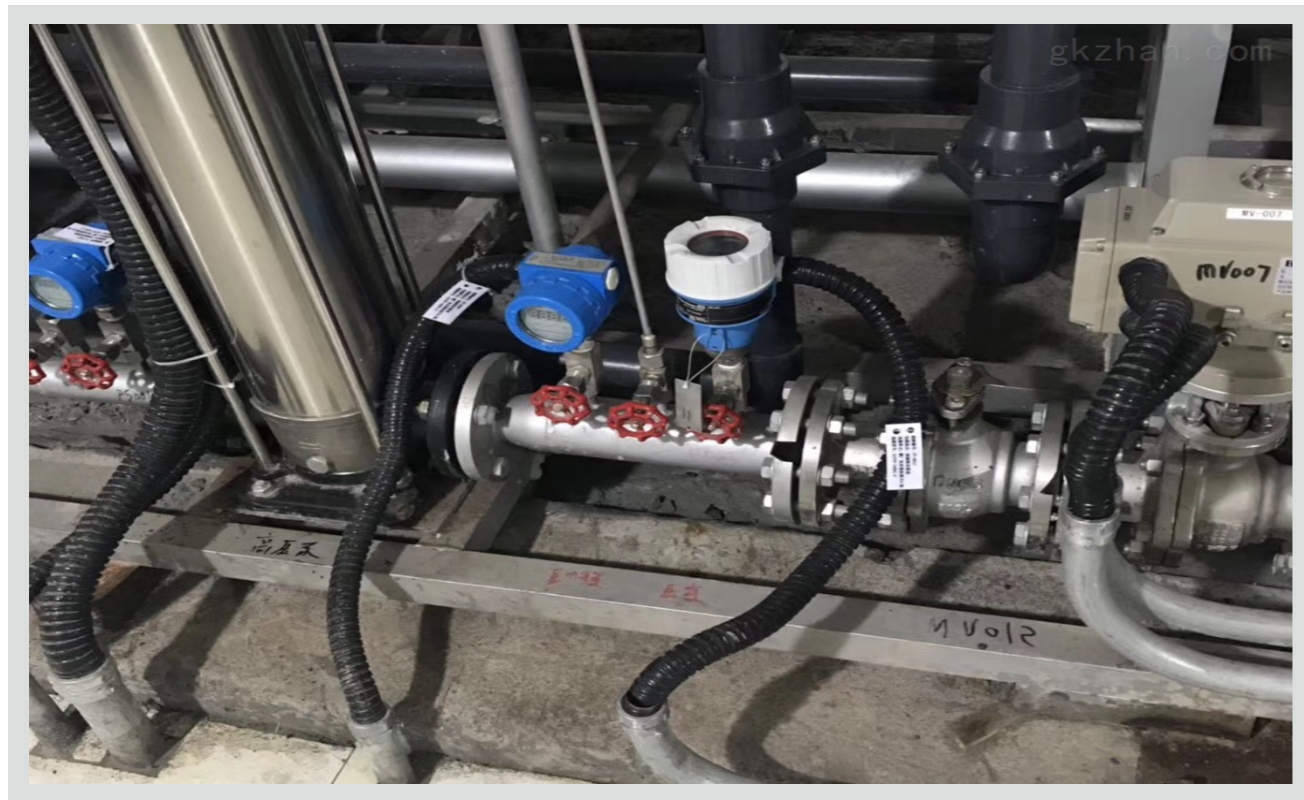


ZAXBAR 26 Pressure Transmitter-Industrial /Clamp



Application	Liquid&Gas
Sensor Type	Silicon Piezoresistive
Measuring Range	0-100MPa
Accuracy	0.075%/0.1%/0.25%
Long-Term Stability	0.1%FS Per Year
Medium Temp	(-40~250) °C
Signal Output	4~20mA/RS485
Explosion-Proof Grade	Ex d [ia Ga] IIC T6 Gb



Unit	Code	Parameters				
Instrument Type	S	Standard	I	Intrinsically Safe		
	F	Flameproof	Z	Customized		
Housing	A3	Aluminium 3051	A2	Aluminium 2088		
Connection Material	4	SS304	6	SS316L	Z	Customized
	6	SS 316L	TA	Tantalum	HC	Hastelloy C
Diaphragm Material	TI	Titanium		Z	Customized	
	C3	Φ50 Clamp	C4	Φ64 Clamp	Z	Customized
Medium Temp	T1	-20°C~120°C	T2	-20°C~250°C	Z	Customized
Electrical Connection	M	M20*1.5	N	½"NPT	Z	Customized
	CH	4-20mA HART		2C	4-20mA	
Electronic Unit	R	RS485 (Apply to 2088 housing only)				
	Z	Customized				
Display	N	Na	D	Yes		
Accuracy	C	0.25%F.S	B	0.1%F.S		
	A	0.075%F.S	Z	Customized		
Rated Range	G1	GP(0~10KPa)	G2	GP(0~35KPa)		
	G3	GP(0~100KPa)	G4	GP(0~600KPa)		
GP=Gauge Pressure NP=Negative Pressure AP=Absolute Pressure	G5	GP(0~1.6MPa)	G6	GP(0~4MPa)		
	G7	GP(0~10MPa)	G8	GP(0~25MPa)		
N1	G9	GP(0~60MPa)	G10	GP(0~100MPa)		
	N1	NP(±100KPa)	N2	NP(-100~400KPa)		
N3	N3	NP(-0.1~1)MPa	N4	NP(-0.1~2.5MPa)		
	A1	AP(0~35KPa)	A2	AP(0~100KPa)		
A3	A3	AP(0~600KPa)	A4	AP(0~2.5MPa)		
	Calibration Range					
User Defined						